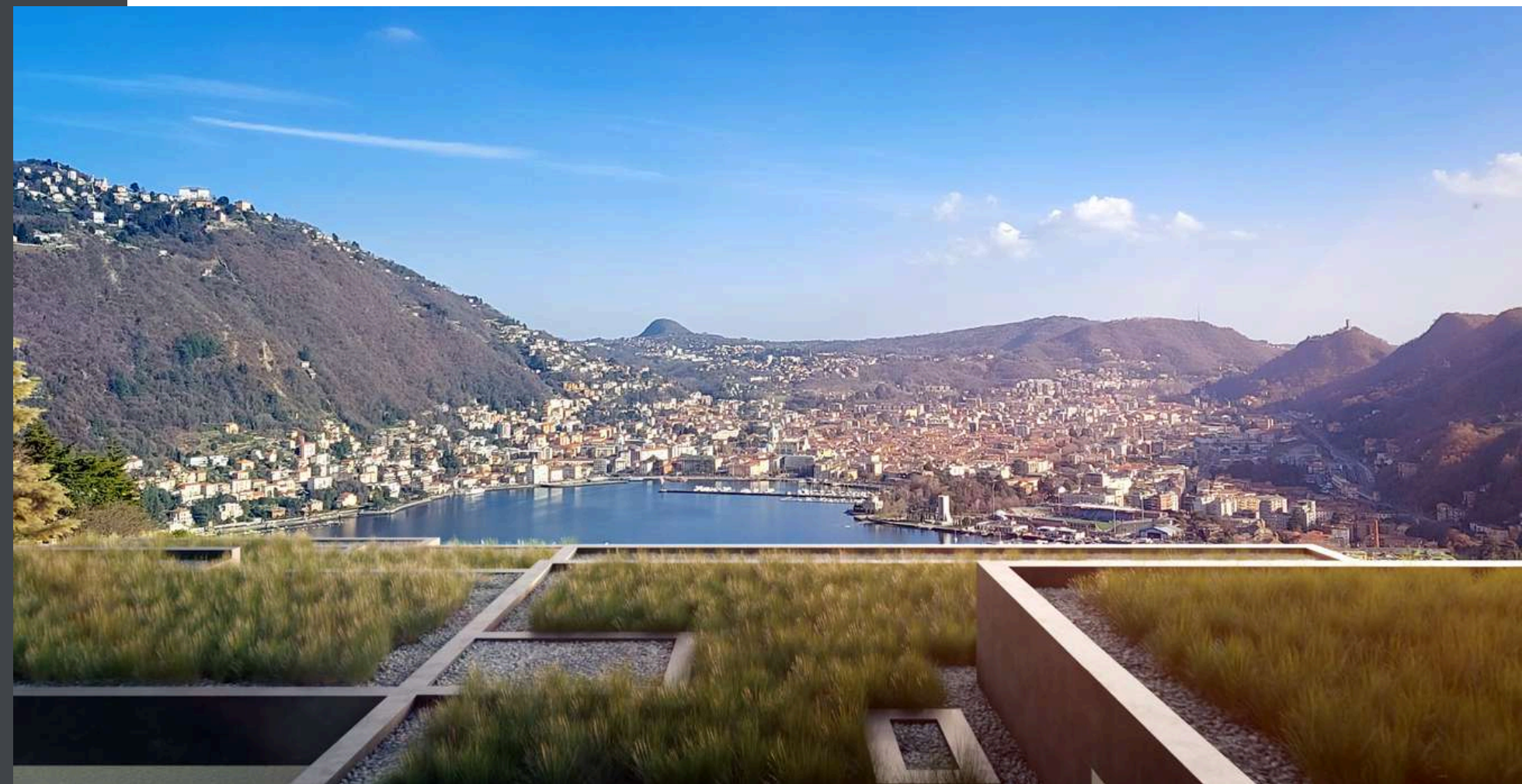




PISANI DOSSI 5

Specifications



Index

Flooring and Walls

Apartment flooring	4
Bathroom walls	5
External flooring	6

External Façade Finishes

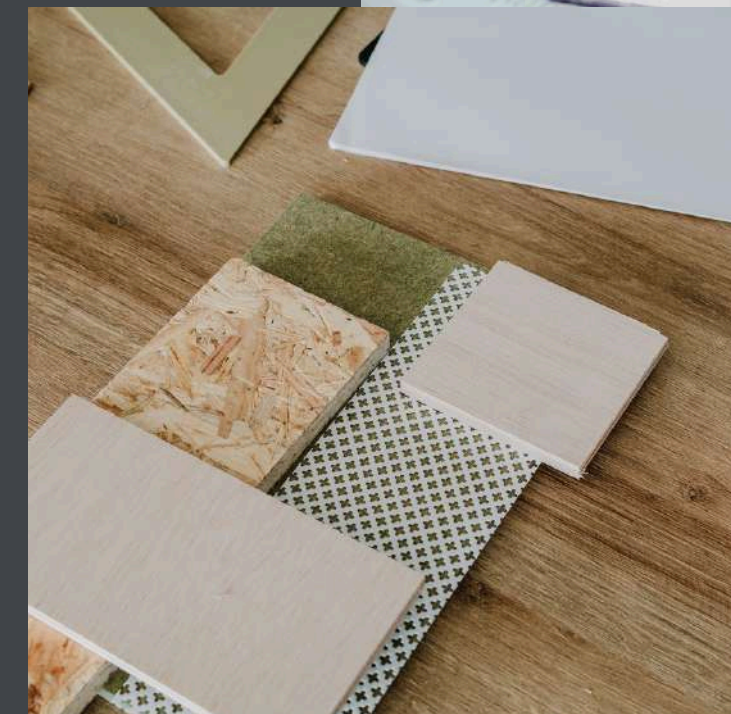
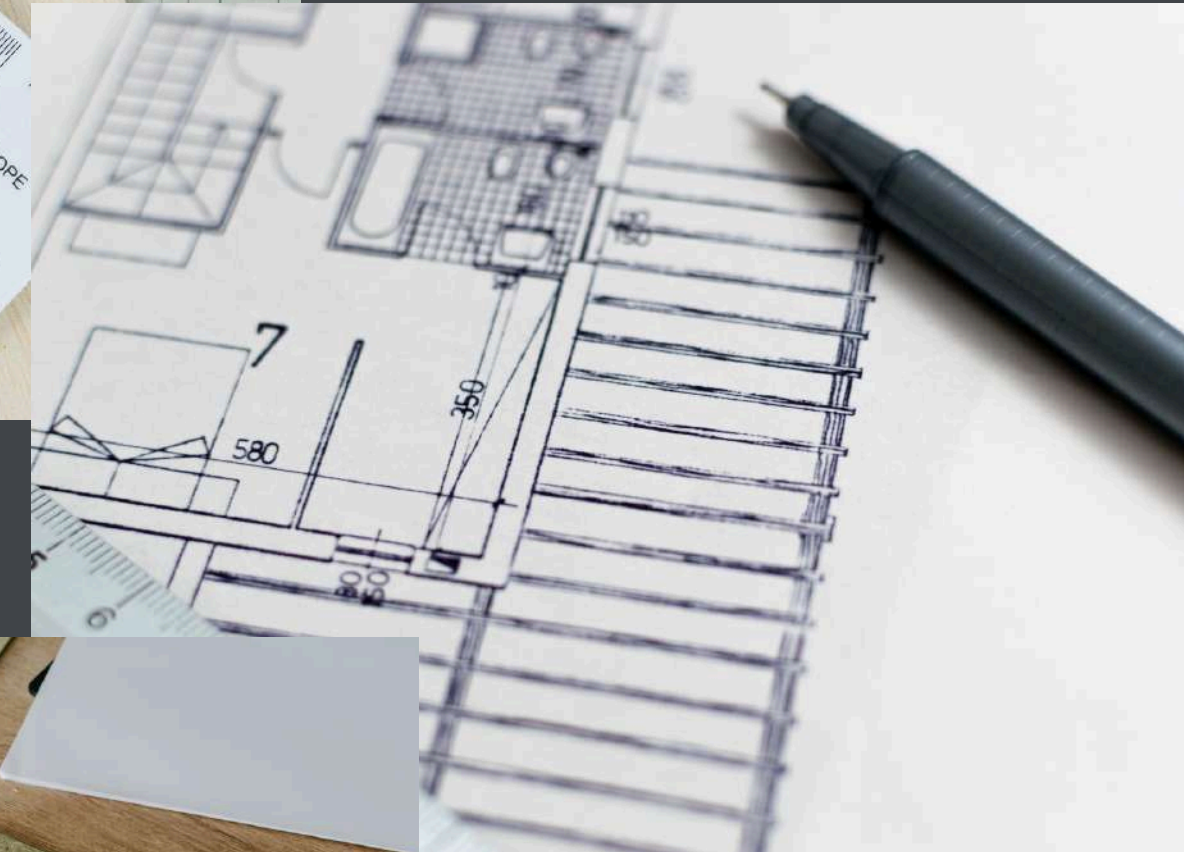
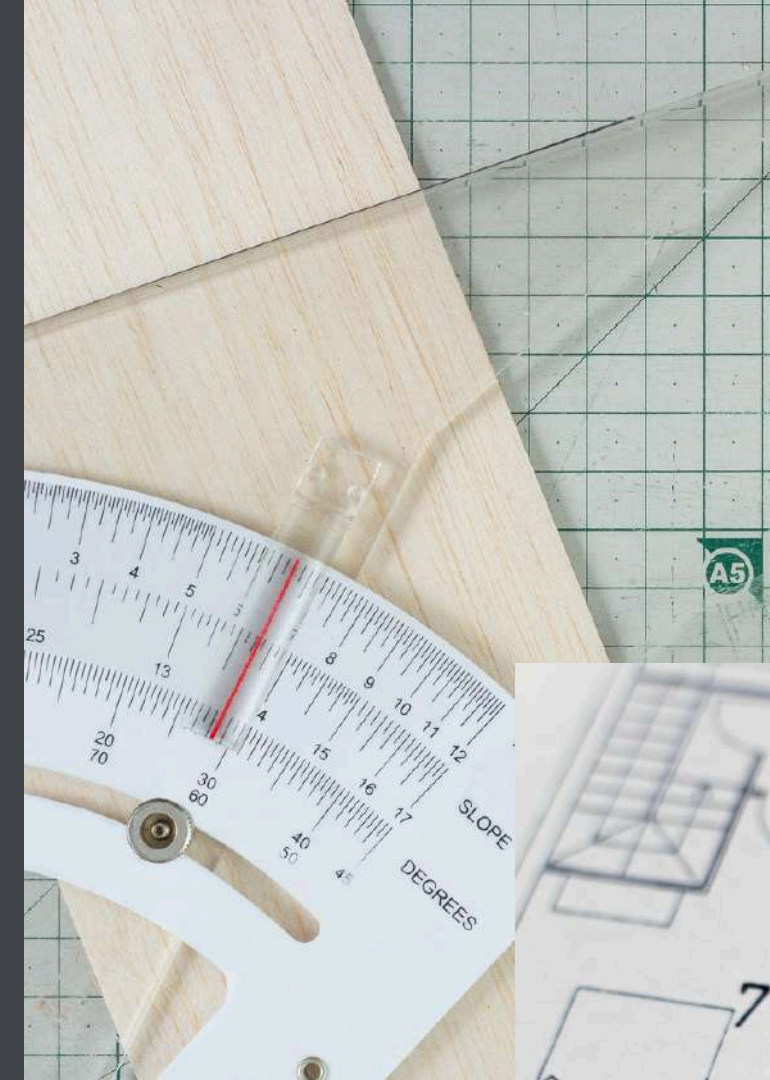
Windows frames	7
Sunblades	8
External insulation	9

Bathroom and Heating

Bathroom fittings	10
Sanitary fixtures	11
Heating	12

Home Equipment

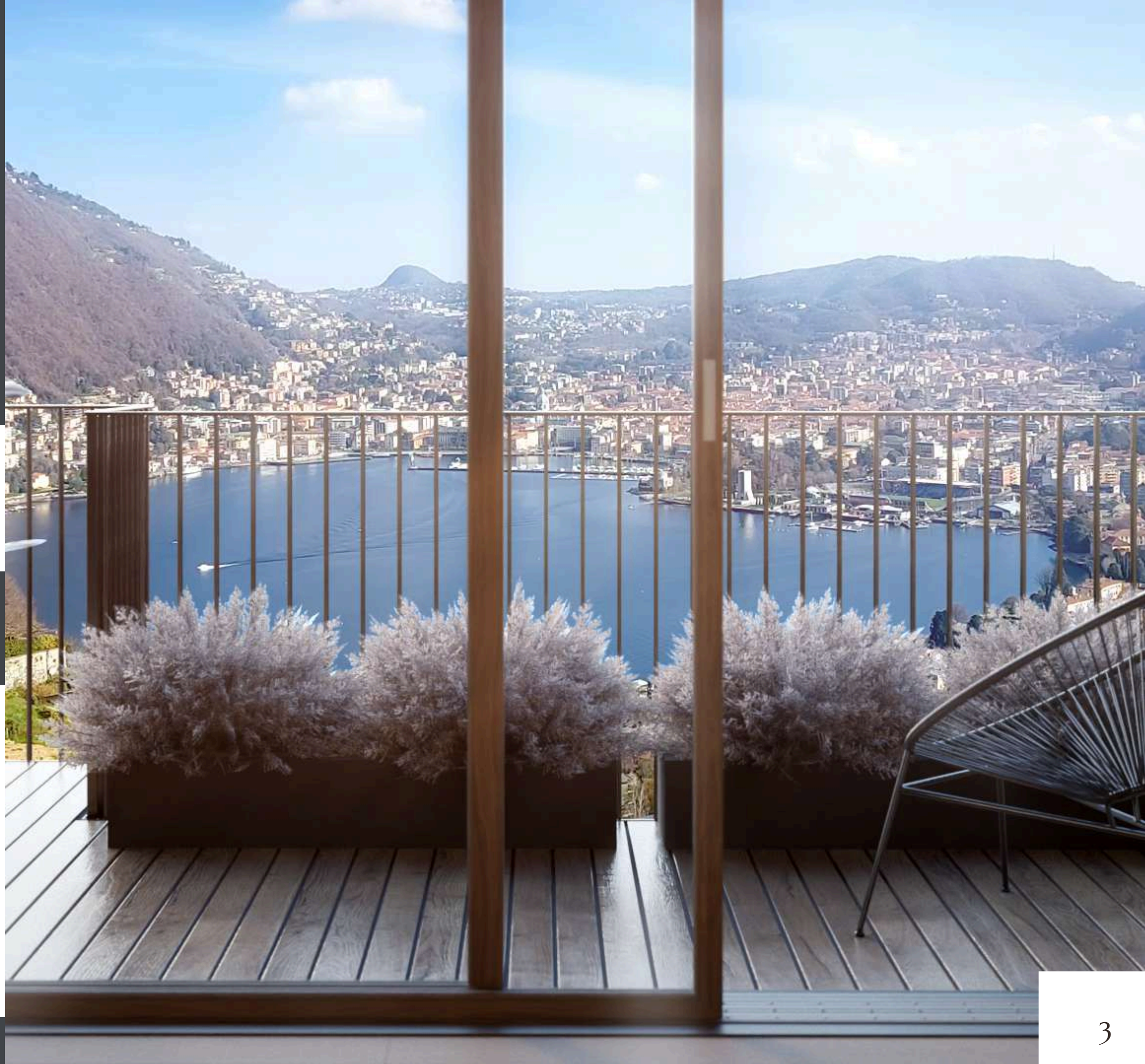
Interior doors	13
Safety doors	14
Home automation	15



The project

A TERRACE ON THE LAKE

An exclusive building of five fully south-facing residences overlooking Como and the first basin of the lake, only two minutes from the motorway links.



Flooring and Walls

Apartment Flooring

- Oak maxi plank wood flooring
- 12 cm TEAK plank wood flooring
- MARAZZI model "large resin look white saten" large format tile 120 x 120



Flooring and Walls

Bathroom Walls

- Large format tiles brand MIRAGE model “CLAY CLO1 Calm” or “CLAY CLO6 Shy” 20x80 cm
- MARAZZI model “large resin look white saten” large format tile 120x120 cm
- MARAZZI brand tiles model “LUME white Lux” 6x24 cm



Flooring and Walls

External Flooring

120x40 cm large format tiles brand MIRAGE mod. GLOCAL (or similar)

Natural stone outdoor floors



External Façade Finishes

Windows Frames

FINSTRAL Ferro Line/Nova Line

The wood and aluminium (internal wood and external aluminium) casement and sliding doors and windows will have a lacquered finish with RAL to be defined.

The glass will be laminated to meet the requirements of the energy calculation.

Sliding and flap openings.



External Façade Finishes

Sunblades

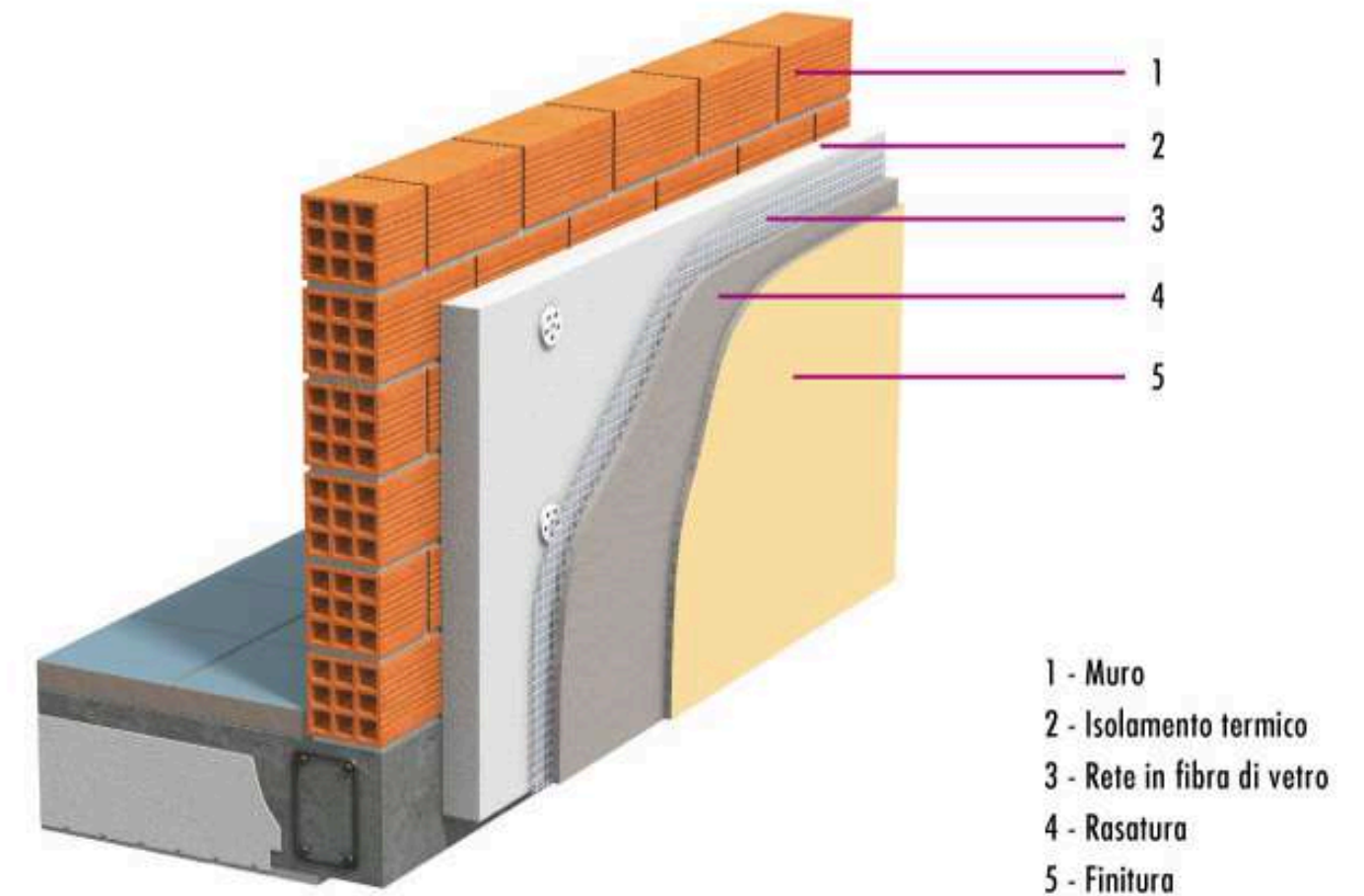
Electrically motorised sunblades GRIESSER V90 (or similar), RAL to be defined.



External Façade Finishes

External Insulation

Thermal insulation of façade including finishing with a fractured paste.



Bathroom and Heating

Bathroom fittings

RITMONIO Diametro35 (or similar)

A successful silhouette with a clear and unique line.



Bathroom and Heating

Sanitary fixtures

Wall hang wc and bidet CERAMICA GLOBO Collezione Mode (or similar)

Contemporary, versatile, featuring washbasins with integrated ceramic side countertops and floor-mounted and wall-hung sanitary ware, it furnishes the most intimate room in the home with style and discretion. Also available in matt white.



Bathroom and Heating

Heating

Solar thermal photovoltaic system

Thermal power station for domestic water heat production and underfloor heating



Home equipment

Interior doors

BERTOLOTTO Collezione Filomuro: contemporary and essential, clean lines and minimal thickness make it ideal for different residential contexts. Wide variety of doors and handles available.



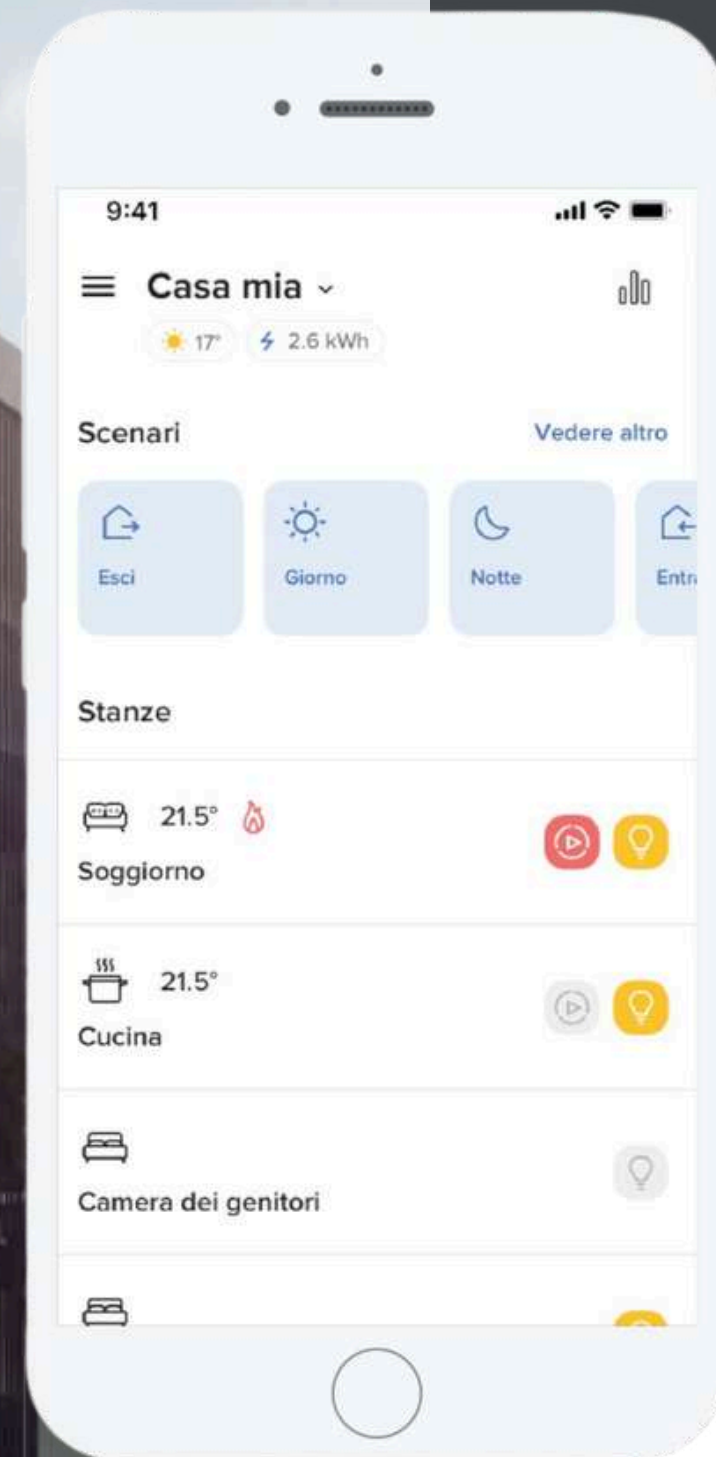
Home equipment

Safety doors

OIKOS Tekno is the safety door with concealed hinges characterized by high-end performance and EI 90 or EI120 fire resistance.

internal finishes white, external black as the windows frames.

Home equipment



Lights & Home Automation

Each apartment will be equipped with a home automation system with the possibility of being expanded or modified for new functions.

Home automation system will allow:

Lighting automation: activates the switching on and off of lights, either single, group, or general.

Automation management: manages shutter closing and opening.

Heating regulation



Contact



LUCA UNGARI - Patio Real Estate

TELEPHONE:
+39 031 3868451

WHATSAPP:
+39 329 8137331

E-MAIL:
info@patiorealestate.com

PATIO
REAL ESTATE

 **PENGUIN**
DESIGN + BUILDING

DOMUS24
DESIGN & BUILDING

